



Summer 2025

HISTORY MATTERS

Summer 2025

Message from the President...

In just three days, we'll celebrate the 249th birthday of our country. I hope that while you are eating those hot dogs and apple pies, you'll take some time to honor those who came before us. Of course there were the giants of history, people like George Washington, Benjamin Franklin, and Patrick Henry, but for the most part our country was shaped by ordinary folks who had the courage to come to a new land in search of a better life. Today I'm thinking about the early families who settled the area we now call North Fulton. Most were farmers; some were merchants, teachers or businessmen, and yes, a few were moonshiners.



For the past few years I've devoted a lot of time to studying the pioneer residents of this area. I think I've finally learned enough that I can share what I've learned. If you need a speaker for your club or civic organization and are curious about local history, I'm your gal. You can contact me at ptatumiller@gmail.com.

There's great news for those of us who research local history. The Fulton County Schools archives is moving from College Park to Sandy Springs. The archives also contains the records for the Milton County Schools. No date for the move has been announced, but I'll keep you posted.

Happy Fourth! I'll see you in the fall.

Pat

~Pat Miller, President

In Memoriam



Margaret Stella Hardy Pierce, beloved mother, grandmother, and friend, passed away peacefully on March 19, 2025, surrounded by the love of her family. Born December 28, 1940, Margaret (known to us as Marge) grew up in Keyport, New Jersey. She married and moved south eventually settling in Alpharetta where she resided for over 65 years. She spent the majority of her life working in the field of electronics until she transitioned to full time "nanny" for three of her four grandchildren.

Marge was a devoted volunteer for the Historical Society and served several terms on our Board of Directors. She will be missed.

Upcoming Programs – Summer 2025

August 21st, 7pm, The Log Cabin

Attention Foodies! We have asked Chef Christy, food historian, to return to the Historical Society for our August program. The theme will be pioneer meats and vegetable storage with period samples.

September 18th, 7pm, The Log Cabin

Don and Diane Wells, authors of *Deciphering the Signs: Sacred Indian Trees and Places*, will present interesting new ways for interpreting Indian culture including Native Science, dowsing, earth energy, and more.

SAVE THESE DATES AND BE SURE TO JOIN US!

~Laura Best

+++++

Happy Birthday!

July

7/2 Lynna Lee
7/5 Curtis Boren
7/16 Barbara Latham
7/24 Buddy Stovall
7/27 Jennifer Lewis
7/29 Bruce Black
7/29 Don Borzilleri

August

8/2 Alan Martin
8/8 Brian Lee
8/9 Norman Broadwell
8/10 Daniel Wright
8/13 Nancy Wright
8/22 Nina Samples
8/24 Cathy Bills

September

9/2 Ralph Latham
9/6 Ben Hollingsworth
9/6 Sheila Pennebaker
9/7 Linda Russell
9/11 Marie Andersson
9/12 Linda Spruell
9/19 Joy Ross
9/22 Martine Broadwell
9/23 Jeff Dufresne
9/29 Sandra Hofmann
9/29 Bill Lusk
9/30 Jim Spruell

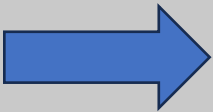
Welcome New Members

Evan Duffy
Jack Duffy
Matt Sevel
Doyle Tatum
Tim Worley

We love new members! Invite your friends, neighbors, and co-workers to join. A membership form can be found at www.aomchs.org

Out and About in Alpharetta with Ben Hollingsworth

Who can name what is thought to be the oldest house in Alpharetta? A clue is that it is on the National Register of Historic Places.



Send your answer to Ben at bhollyart@comcast.net Be the first to correctly answer the question and Ben will send you a picture of a historic home in North Fulton and you'll get a "shout out" in our next newsletter! 😊

Historic preservation is very important to the AOMCHS. In fact, three of our board members are also members of the Alpharetta Historic Preservation Commission. Ben, a local artist and excellent photographer, has a photo collection of many historic buildings in and around Alpharetta. Take a look below at the Gardner House, both before and after the restoration.



Original Photo – Mrs. M.E. Gardner House

Emiline Gardner, widow of John Gardner who died prior to 1900, purchased this property in 1907. The house was built by Emiline's son Sherman. The exact date it was built is unknown, possibly 1910-1915. The cost of construction was less than \$500. US Census records show Mrs. Gardner at this location in 1910. At one point, Phil Monzo owned the house and did some remodeling over several years. The house was sold

around 2014 and the developer promised to restore the house. After several years of planning, the house has been restored (see picture below.) It's a little hard to tell that it is the same house. Several additional homes have been built on the lot surrounding the house.



Current (2025) view of the Gardner House – Cumming Street

The original part of the house is in the center of the photo. The additional structures on the left and right have been added. It may not look like the original house, but you can see the original part that has been preserved. The additions on each side are permitted under current preservation regulations.

~Ben Hollingsworth

From the Archives



Col. Jack Peevy Shadow Box from the AOMCHS Archives Collection

In 2013, shortly before his death, Col. Jack Peevy donated two historic houses to the Alpharetta and Old Milton County Historical Society. One of the homes donated to the society, The Spence House, is possibly a pre-civil war house making it one of the oldest houses in Alpharetta. Both homes donated by Mr. Peevy sit on what was his family's property at the corner of Mayfield and Bethany roads. The historical society maintains and rents the houses with the rental proceeds going to preserve the historic homes and their role in local history and to the society's overall projects in general. "My sole motivation was to preserve these houses and the history they represent," said Col. Peevy in an Appen Media article at the time of the donation.

Col. Peevy's grandparents, Bascom and Oma Spence, bought the farmhouse in 1918. His mother, Ruth Spence Peevy Wills, was born in the house in 1920. Mrs. Wills was a lifelong Alpharetta resident, living

in the house where she was born, and became one of Alpharetta's most well-known and leading residents. She graduated from Milton High School and went on to become a teacher, assistant principal, and principal at several Alpharetta schools. The surrounding farmland that Mrs. Will's owned is now a residential subdivision named "Ruth's Farm" in her memory.

According to the Appen Media article, Nan Harman-Dempsey, the Alpharetta Historical Society president at the time, said "We're all about preservation. We grew up with these families, so we're thrilled to have this bequest because of the history associated with it. The money we'll receive from the property will go to help our preservation efforts. We are proud that Col. Peevy entrusted this to us."



*Far right, Nan Harman-Dempsey, Alpharetta Historical Society President, 2013
Col. Jack Peevy is beside Ms. Harman-Dempsey*

(Appen Media)

After graduating from Milton High School in 1960, Colonel Peevy pursued higher education at North Georgia College (now the University of North Georgia), earning a Bachelor of Science degree in Business Administration. Upon graduation, he was commissioned as a U.S. Army Infantry Officer in 1964.

In 1965, Col. Peevy deployed to Vietnam, where he served as a Rifle Platoon Leader with the 1st Battalion (Airborne), 8th Cavalry Regiment, 1st Air Cavalry Division. During combat operations, he sustained serious injuries on seven separate occasions and spent two and a half years recovering in various military hospitals.



Despite these severe wounds, Col. Peevy returned to active duty and was assigned to Headquarters Company, 6th Special Forces Group (Airborne) at Fort Bragg, North Carolina. His subsequent assignments included roles in Intelligence and Operations, serving as a B Team S-3 Commander and later as a Battalion S-3. He also held key positions in Civil Affairs, Military Intelligence, and Force Modernization, ultimately serving as Deputy Commander of a Military Intelligence Command.

Col. Peevy later assumed command of a Military Intelligence Company specializing in Combat Electronic Warfare and Intelligence within the Special Forces Group (Airborne)—a role widely recognized as one of the most demanding within the Special Operations community.

Following his promotion to Colonel, he served as Deputy G-2 (Intelligence) for Third Army at Fort McPherson and was later assigned to U.S. Forces Command during Operation Desert Storm. For his final assignment, he took command of a Military Intelligence Detachment (Strategic), concluding a distinguished 30-year military career with his retirement in 1994.

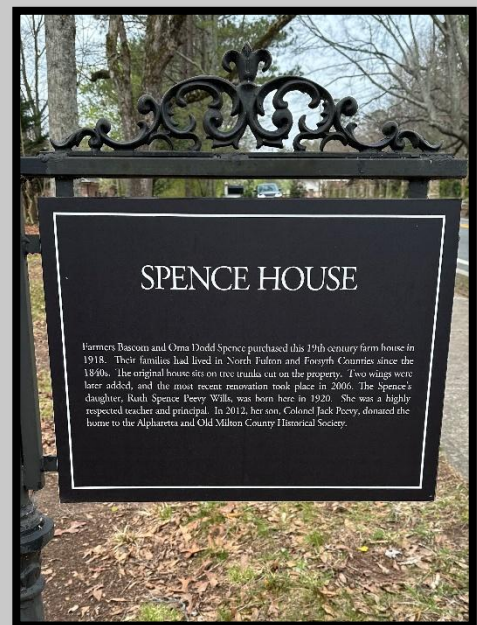
His awards, decorations, and qualifications include the Legion of Merit, Bronze Star Medal with V Device, Purple Heart Meritorious Service Medal, Parachutist Badge, Combat Infantryman's Badge, and the Special Forces Tab.

We're thankful for Col. Peevy's service and indebted to him for his donation to the Society and the community.

~Connie Mashburn



The Spence House, 2025



(Photos courtesy of Kim Roddy)

Shack Lewis, AOMCHS VP and Property Manager, has been hard at work recently to “spruce up” the outside appearance of the Spence House as well as get some projects accomplished inside the house in preparation for renting it this summer. Shack has been assisted by Kim Roddy, AOMCHS treasurer, and members of the Society and community who helped during a community clean-up day in the Spring.

The Archives

Society Receives Donation from Lynna Lee (AOMCHS Cemetery Chair) and Arbor Terrace at Crabapple



We extend our sincere thanks to Lynna for generously donating a collection of beautifully framed vintage photographs to our Archives. The photos were rescued from Arbor Terrace Assisted Living during a recent remodel. We are also grateful to Tricia Holloway, Executive Director of Arbor Terrace, for her support in allowing Lynna to preserve these pieces of local history by passing them along to us. Pictured admiring the photos is Connie Mashburn.



(Photos courtesy of Jackie Angel)

Archives Department Hours

Tuesday/Thursday: 10:30AM - 2:30PM

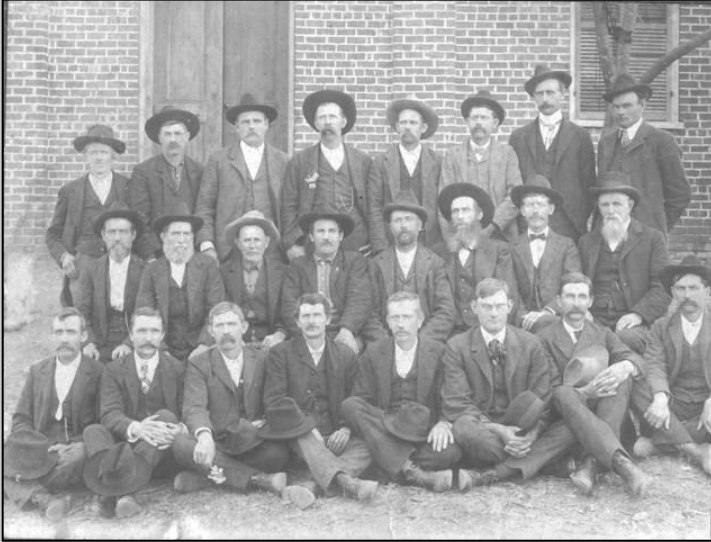
Our volunteer staff is happy to assist with research, based on our availability. If your research is extensive, please request an appointment at least 24 hours prior to your visit. We can be contacted at:

aomchsarchives@gmail.com

Phone #: 770-231-7158

Looking Back with Connie Mashburn Historian

Milton County Grand Jury



The primary function of the Milton county grand jury was to review possible felony charges to determine if there was sufficient evidence to issue an indictment which would result in a jury trial. If there was not sufficient evidence the case would be dismissed.

Grand jury members were selected from the county jury pool compiled by a jury commission. Those chosen “were to be among the county’s most intelligent and upright citizens.” The county sheriff would send a summons to notify those selected of the dates and times the grand jury would convene. Typically, the grand jury term was the same as that of the Milton County

Superior Court which convened in March and August of each year. The indictment cases mentioned above would be tried during the superior court session. The court was presided over by the Blue Ridge circuit judge. Milton County and several neighboring counties made up the Blue Ridge circuit.

The Milton County grand jury had duties beyond reviewing felony cases. For much of the 19th century, the grand jury had oversight responsibility for various county operations and facilities including roads, bridges, schools, and structures. At the end of each superior court session, the grand jury foreman’s presentment would provide the grand jury assessment with recommendations for the various county operations and properties.

The following is taken from an 1866 grand jury presentment:

“General Presentment of the Milton County Grand Jury for the March 1866 Superior Court

The Committee on Public Buildings report the Court House in bad condition windows, shutters, chimney and door steps needing repair. We recommend as a body, the Inferior Court to levy a tax of 50 per cent on the state tax to be levied and to be equally divided repairing the court house, the bridges and relieving the destitute of the county.”

Photo above: Milton County Grand Jury 1910

Photo at right: Milton County Grand Jury 1920



~Connie Mashburn

Member Spotlight - Jackie Angel

Jackie has been secretary of the AOMCHS Board of Directors for five years. She was born in Rome, GA and lived in Calhoun, GA until she graduated from Calhoun High School and went away to school at the University of Georgia.

Jackie earned her BSW in Social Work from UGA in 1982 and her Master's in Social Studies Education from Georgia State University through the Master Teachers of Economics program in 1985. She began her career in education with the Georgia Council on Economic Education, leading teacher workshops at universities across the state. In 1986, she was hired by Fulton County Schools, initially teaching at Palmetto High School before transferring to Milton High School upon Palmetto's closure in 1990.

Jackie dedicated over three decades to educating and enriching the civic lives of students in North Fulton County. A passionate Social Studies teacher, Jackie was a member of the Milton HS faculty from 1990 until her retirement in 2021.

Jackie spent 31 of her 35 years in Fulton County Schools at MHS teaching Economics, AP U.S. Government, Constitutional Law, Sociology, Current Issues, Personal Finance, and Local History. For 15 years, she was the Social Studies Dept. Chair. Her passion for civic education was evident in the immersive experiences she provided her students: annual trips to the Georgia State Capitol, Fulton County Criminal Courts, and mock city council meetings in partnership with the City of Alpharetta and later, the City of Milton. Her work in this area led to the formation of the Alpharetta Youth Council, giving students direct opportunities to engage with local government. Jackie also sponsored the Close-Up program, taking students to Washington, D.C. to participate in a program designed to inspire them to become active, engaged citizens. In recognition of her contributions to civic education, the City of Alpharetta passed a resolution in her honor in 2002.

Jackie was selected as a 1990 Summer Fellow with the National Endowment for the Humanities at George Washington University in D.C. She was named Milton High School Teacher of the Year in 1995. In 1999, she was one of 30 teachers nationwide chosen to attend the U.S. Supreme Court Institute at Georgetown Law School

where she was privileged to meet Justice Sandra Day O'Connor. In 2001, she and one of her students were among ten nationwide winners of the Close-Up/MCI Capitol Opportunity Essay Contest. She served on the Georgia 6th District Congressional Education Advisory Sub-Committee from 2005–2017. And, in 2019, Jackie was honored to serve as the Milton HS Homecoming Parade Grand Marshal!



Jackie served as the MHS Senior Class Sponsor and Graduation Coordinator from 2000 to 2021, organizing every aspect of senior year events and graduation ceremonies — starting back when graduation was held on the school's football field to finishing her career with the MHS 100th graduation at Ameris Bank Amphitheatre.

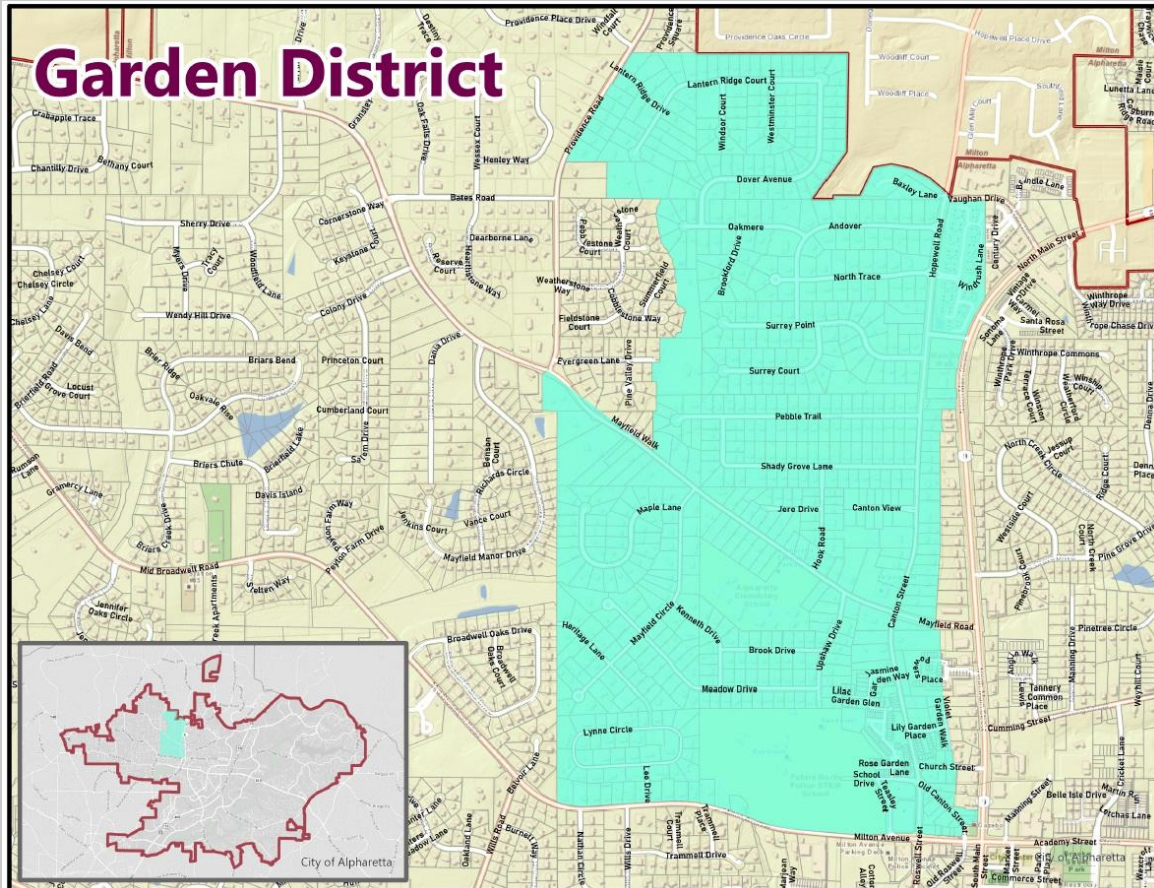
In 2017, when the original MHS building was slated for demolition, Jackie partnered with former principal Phil Thomas to save key school artifacts and organize a final walkthrough that drew over 1,000 alumni and community members. That effort led her to leading and planning the school's 100th Anniversary Celebration, a multi-year project culminating in 2021. In 2022, Jackie was chosen as a member of the Milton High School Hall of Fame.

In addition to reading with her book club, being an avid Atlanta Hawks season ticket holder, and spending time with family and friends, Jackie loves to travel. Some memorable trips have been a two-week trip driving down the Pacific Coast Highway, a two-week trip driving along the New England coast including hiking in Acadia National Park, hiking in Glacier National Park in Montana, a 65th birthday trip to see the Eagles at the Sphere in Las Vegas, and annual family vacations to Amelia Island, Florida that haven't been missed in 30 years. Since retirement in 2021, Jackie has taken three trips abroad, visiting eleven countries in Western and Central Europe.

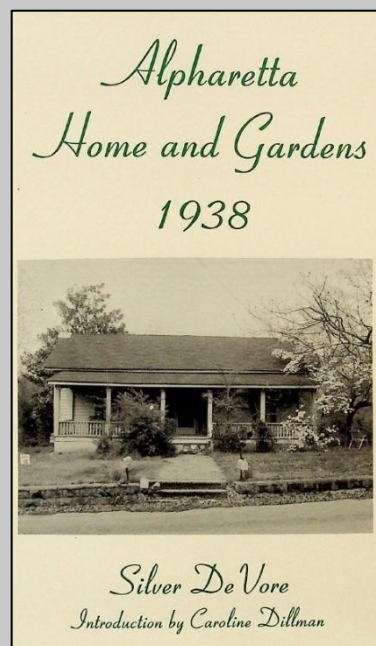
Jackie enjoys serving as Secretary of the AOMCHS and participating in society programs and activities. She also volunteers with the UGA Silver Dawgs Guest Services Team and the Milton HS Hall of Fame. Jackie lives in Brookhaven with her husband of 37 years, Steve. They are the proud parents of Beth and her husband Matt, and joyful grandparents to granddaughter Mackenzie.

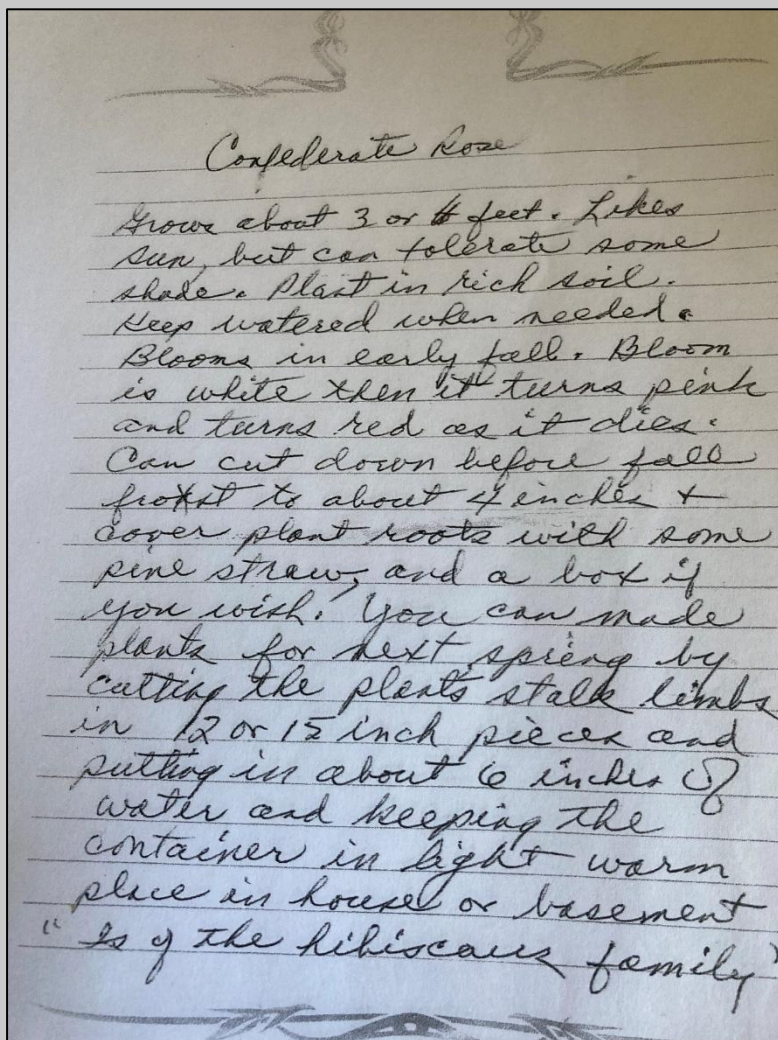
The Alpharetta Garden District and the Janice Jones Confederate Rose Hibiscus

If you have driven down Canton Street or Mayfield Road lately, you may have noticed the new signs marking the boundary of the Alpharetta Garden District. The new official boundary of the garden district (version 5) is shown in green on this map.



Even though these signs are new and the official map of the district is new, Alpharetta has a rich history of gardens. I found this little publication from almost a century ago that describes various families' yards and gardens, often giving only names and landmarks long gone. Putting the pieces together has been both challenging and enjoyable.



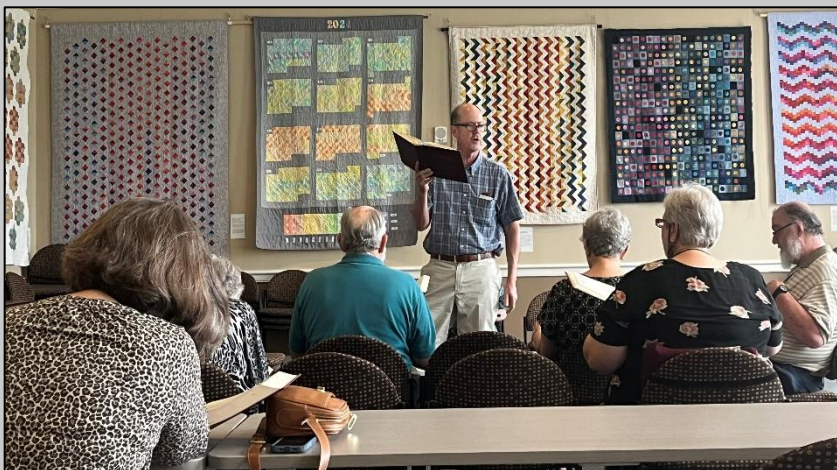


Around Easter of this year, I received a gift from local master gardener and AOMCHS Trustee Janice Talluto. Janice was given a cutting from the mother plant of a Confederate Rose by Rachel Jones, George Jones's wife. The letter with care instructions shown at left is from Rachel. George and Rachel had a daughter named Janice who passed away early in life and so there was a special connection between Rachel and Janice T.



And so, we welcome to our garden the "Janice Jones Confederate Rose Hibiscus."

~Shack Lewis



The 157th **June Sing** took place on June 8th at Alpharetta City Hall. Since 1869, people from near and far have gathered on the second Sunday in June to sing in Alpharetta! The Sacred Harp singers sing a cappella (without musical accompaniment) as they read shape notes—a right triangle for fa, an oval for sol, a rectangle for la, and a diamond for mi. A popular Christian hymnal with these shape notes, *The Sacred Harp* by B. F. White and E. J. King, was first published in Georgia in 1844, resulting in this style of singing being called "sacred harp" singing.

~Lynna Lee

Black History Month and Juneteenth

Our cemeteries chair, Lynna Lee, attended a historical cooking event in Roswell on February 22nd at the Smith Plantation. Clarissa, a historical cook, demonstrated how to cook a vinegar pie on an open hearth fire. She cooks various dishes the last Saturday of the month at the Smith Plantation. Thank you to Lynna for the recipe and pictures.

Pecan Pie

3 eggs
1 stick butter
1t vanilla
1T corn meal
1c pecans
1c sugar
1T vinegar
1T corn syrup
9" unbaked pie shell

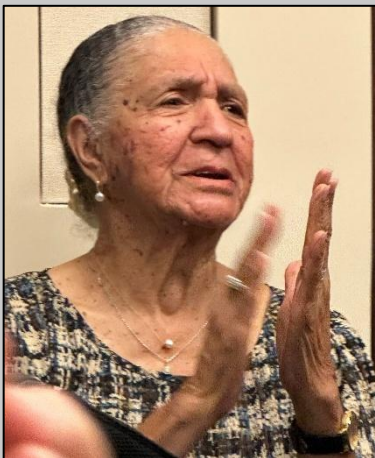
Mix all ingredients except pecans. Dust pecans with 1t of flour and fold into mixture. Mix lightly. Pour into pie shell and bake at 350 degrees for 1 hour.

Vinegar Pie

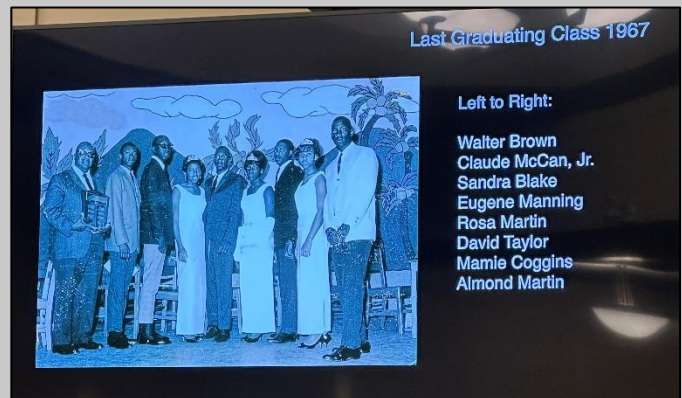
Leave out pecans and add freshly grated nutmeg.



As part of the city of Alpharetta's Juneteenth celebration, the premiere of the *Bailey-Johnson School & Community* documentary was shown to a full house at Alpharetta city hall on June 18th. In attendance were many Bailey-Johnson alumni and community members, a former Bailey-Johnson student who went on to teach at the school, members of the AOMCHS, the community at-large, and the documentary film-maker, Mark Maloney. The documentary project was a joint effort of the Alpharetta Arts and Cultural Services, the AOMCHS, and the Bailey-Johnson community.



*Mazie Strickland McCain
Bailey-Johnson Alum and Teacher*



(Photos courtesy of Jackie Angel)

+++++

*Thank you to member **Joan Borzilleri** for the following article on our late President Emeritus, Ed Malowney, and his research about the history of local post offices. This article originally appeared in the Milton Historical Society Newsletter.*

A Life in Full: Ed Malowney and the Amazing Post Office Project - Part 2

In **Part 1** of the article we explored the amount of research required to document the early history of post offices in old Milton County. We looked at the process the federal government followed to establish and verify locations for a new post office before Rural Free Delivery. The project, led by Ed Malowney, included researchers Barbara Latham and Connie Mashburn.



Ed Malowney



Barb Latham and Connie Mashburn

Part 2 gives us an idea of the depth of research performed. This installment outlines examples of:

- Postmasters who served in Alpharetta, Milton County's county seat.
- Information provided on the Postal Verification Form for the Freemansville post office.
- The postmasters who served at Freemansville and the compensation received by them.
- Resources uncovered in the research.
- An example of postmaster biographies included in the research: Captain Nehemiah Judge Garrison, Free Soil's (later Freemansville) first postmaster appointed in 1850.

Update from Part 1

We included this entry in our first installment: In the project's summary of post offices is an odd entry. 'The **Calamity Jane Post Office** opened only briefly during the 1970s to accommodate golfers during the two weeks of a U.S. Open Golf tournament at the Atlanta Athletic Club.'

So, did you wonder where the name Calamity Jane came from? Turns out that it was the name of golf legend Bobby Jones' legendary putter! Now we non-golfers know.

Alpharetta's Early Postmasters

The following table shows Alpharetta postmasters from 1863 through 1905, and the payment received for each year. Over the years some of the local old Milton County post offices were consolidated into the Alpharetta post office. It served as the county seat.

	Post Office	Postmaster	Compensation	Year
1	Alpharetta, Milton	Joel Rucker	\$0.00	1863
2	Alpharetta, Milton	Joel Rucker	\$32.75	1865
3	Alpharetta, Milton	O. P. Skelton	\$80.00	1869
4	Alpharetta, Milton	James Madison Dodd	\$67.00	1871
5	Alpharetta, Milton	Isham Teasley	\$36.00	1873
6	Alpharetta, Milton	Isham Teasley	\$76.58	1875
7	Alpharetta, Milton	Isham Teasley	\$64.85	1877
8	Alpharetta, Milton	Isham Teasley	\$88.20	1879
9	Alpharetta, Milton	Isham Teasley	\$119.31	1881
10	Alpharetta, Milton	O. P. Skelton	\$157.25	1883
11	Alpharetta, Milton	O. P. Skelton	\$200.67	1885
12	Alpharetta, Milton	J. H. Collins	\$212.01	1887
13	Alpharetta, Milton	Joseph H. Collins	\$242.66	1889
14	Alpharetta, Milton	Robert J. Webb	\$251.67	1891
15	Alpharetta, Milton	R. R. Treadwell	\$200.11	1895
16	Alpharetta, Milton	R. R. Treadwell	\$216.16	1897
17	Alpharetta, Milton	Nannie Hayes	\$237.56	1899
18	Alpharetta, Milton	Lou Genia Hayes	\$245.30	1901
19	Alpharetta, Milton	Lou Genia Hayes	\$267.15	1903
20	Alpharetta, Milton	Oscar L. Barnwell	\$404.93	1905
21	Alpharetta, Milton			

Freemansville Post Office

Established as Free Soil in May 1850, the name was changed to Freemansville in 1850 in Cherokee County, later Milton County. The post office was located on the southeast corner of Birmingham Road at Freemanville Road. It was discontinued on June 9, 1905, with mail service transferred to Alpharetta.

On July 27, 1892 the U.S. Post Office Department, Topographer's Office, sent the Postal Verification Form letter 101.0 to the postmaster requesting details about the location of the post office in order

to determine, with as much accuracy as possible, the relative positions of its post offices. This was necessary to correctly delineate them on departmental maps.

The August 3, 1892 form was completed by **Postmaster Joseph D. Maddox** as follows:

“The name of my Post Office is Freemansville in Milton County, Georgia.

“The name of the nearest Office on route #21267 is Hartford, and its distance is 3 miles, by the traveled road, in a Northwest direction from this, my Office.

“The name of the nearest Office, on the same route, on the other side is Fields Cross Roads and its distance is 4 1/2 miles in a South direction from this, my Office.

“The name of the nearest Office off the route is Joe, and its distance by the most direct road is 3 1/2 miles in a Northeast direction from this, my Office.

“The name of the most prominent river near it is the Chattahoochee River, a distance of 13 miles south of the Post Office.

“The name of the nearest creek is Little River Creek. The Post Office is a distance of 2 miles from said nearest creek, on the East, South, and North side of it.

“The name of the nearest railroad station is the Canton Station of the Marietta and North Georgia Railroad. The Post Office is located 14 miles from the Station, on the East side of the railroad.”

Signed by Freemansville Postmaster Joseph D. Maddox

Hand-written addendum on the form: “The name of the nearest office on route No. 21206 is Dinsmore and its distance is 3 1/4 miles by the traveled road in an East direction from this my Office. The name of the other Office nearest on the same route, on the other side, is Batesville and its distance is 4 miles in a West direction from this my office. Freemansville Post Office is the oldest office in the county and the others were established around it. It is now located where it has been for the last thirty years with the exception of a few weeks only.”

Research note: There are no railroads shown inside old Milton County, the closest being the R & D (Rome and Decatur), which stopped at the Chattahoochee River in Roswell, running southeast through Dunwoody to Chamblee. There it connected to the Richmond & Danville Railroad. Teddy Roosevelt once rode those tracks through Dunwoody to get off at the river.

Freemansville Postmasters



Many of the early post offices were located at crossroads, the earlier of which were often tribal trails and trade routes. The position of postmaster was a coveted job with monetary compensation.

Following is a representative sample of the prominent citizens who served as postmaster at the Freemansville Post Office and the year each was appointed. Compensation was documented for this post office beginning in 1863 and is included for the years indicated.

- Nehemiah J. Garrison - May 30, 1850
- Joseph W. Johnston - May 1, 1851
- Wiley C. Anderson - April 8, 1858
- John G. Cantrell, MD - June 9, 1868; 1869 pay = \$11.84
- Garrison Cross - November 3, 1870; 1871 pay = \$18.00
- Cicero H. Maddox - September 10, 1873; 1875 pay = \$9.47
- Joseph D. Maddox - March 2, 1891; 1891 pay = \$42.14
- Cicero Cincinnatus Maddox (pictured above) - October 4, 1900; 1901 pay = \$22.87

Other Area Post Offices and Notable Postmasters

- **Arnold:** James B. Delk, Thomas F. Gregory, Sarah Burroughs
- **Birmingham:** Smith Johnston, Thomas B. Newton
- **Crabapple:** F.M. Fowler, Simeon L. Rucker, John W. Rucker
- **Fields Cross Roads:** Lawson Fields, Shurley W. Cook, J.M. Upshaw, Charles Hagood
- **Troy** (later established as Arnold): Thomas B. Cook, Eli McConnell, S. McConnell

Postmaster Biography Example

Using available documentation, the research group uncovered biographical material for many of the postmasters. One notable figure was Nehemiah Garrison.

Captain Nehemiah Judge Garrison (1776-1862)

"Captain" Nehemiah Garrison was born March 23, 1776 in Dan River, Virginia. He was the second child of David Garrison and Elizabeth Barksdale Garrison.

At an early age, he and his family immigrated to the Greenville, S.C. district. He married Sarah "Sally" Evans, May 23, 1799, in Greenville, S.C. He served as captain in the War of 1812 in the 4th Regiment (Booth's Regiment), Georgia Militia, and was a prisoner from this war.

According to relative Bill Garrison, Sr., Captain Garrison served over Fort Daniel at Hog Mountain in Gwinnett County and was involved in building 30 miles of road westward to the Peach Tree Corners (Old Peachtree Road); Garrison was involved in the establishment of four forts across north Georgia.

He immigrated to Hall County, Georgia and represented Hall County in the Georgia Senate. Captain Garrison was one of five members of the first Inferior Court, and founder of Hall County, Georgia, where he resided before moving to Cherokee County. He resided there until his death, afflicted with pain.

The 1850 U.S. Census shows him living in Division 15, Cherokee County with his wife Sarah and daughter Mary Barksdale Garrison Dickerson.

Captain Garrison died July 18, 1862 at Fort Buffington, Cherokee County, Georgia. He is buried in downtown Canton at Riverview Cemetery.



***Area Garrison descendants at a Milton Historical Society preservation program.
In the front is Pat Miller, President of Alpharetta and
Old Milton County Historical Society.***

Research Sources used in the Post Office Project

U.S. Coast Survey Map, Central of Georgia Railway Map of Alabama and Georgia, USCS Topographical Map, Shole's Georgia State Gazetteer, Georgia Sketches of Counties, Towns, Events, Institutions, and Persons, Georgia DNR Historic Resources Study of 1977, Ancestry.com, U.S. Census data, City of Milton Historical Markers, Register of Civil, Military, and Naval Service, 1863-1959.

Our Inheritance and Challenge

This encyclopedic research study begs to be saved and shared with the community. It is a detailed picture of life in the 19th century and the settlers who made a good life here. A collective 'thank you' to Ed, Barb, and Connie for their years of work. We owe you!

Membership Programs Spring Recap

April 2025

The Swan House

Presenter: Robert M. Craig, Professor Emeritus, Georgia Tech

Professor Craig presented an engaging program on the 1908 founding of the Georgia Tech School of Architecture, with a special focus on one of its most distinguished graduates, architect Philip Shutze. Shutze is best known for his design of the iconic Swan House, created in the 1920s for Edwin and Emily Inman, located on the campus of the Atlanta History Center. The home is widely regarded as his masterpiece.

Dr. Craig highlighted the Swan House's rich blend of Greek, Italian, and English architectural elements—such as classical columns, pedimented doorways, elegant room layouts, and a cascading fountain—each inspired by renowned buildings and gardens from various cultures and historical periods. During his lifetime, Shutze earned the title of “America’s Greatest Living Classical Architect.”



May 2025

The History of Tools

Presenter: Earle Cadwell



Mr. Cadwell is an avid collector of original tools. He brought in some of his collection and also had some of today's tools to compare what has been used throughout history versus modern times. Said Shack Lewis of the presentation: *"Awesome AOMCHS program at the FFA Log Cabin! Earl Cadwell brought in some very old tools and explained the history and evolution of them. Something that I learned.... Yes, these old tools take much longer and much more muscle and mental and physical skill to get the job done than the modern day electric motorized tools. But they are not obsolete. If taken care of, they will last forever. Their modern counterpart's motors and batteries will fail, plastic will dry and crack, the technology will become obsolete, and the next new laser version will take its place. All that plastic and battery chemicals will end up in a land fill and these old tools will still be used by the very few artisans that know how to use them and just enjoy the process. Nothing against the machines."*



(Photos courtesy of Lynna Lee)

Annual Member Picnic 2025-2026 Board of Directors Installation

On June 8th, Hospitality Chair Jennifer Boren and her committee graciously hosted the AOMCHS Annual Picnic at the historic Mansell House. The table settings were especially lovely, featuring hydrangeas freshly cut from Jennifer's own garden. The surrounding grounds, beautifully maintained by the Alpharetta Garden Club, added to the charming setting, and the house itself provided a warm and welcoming atmosphere for our gathering.

Lunch was enjoyed on the porch, where overhead fans kept everyone cool and comfortable. The Society provided delicious BBQ, while members contributed an impressive variety of side dishes and desserts. Before the meal, Pat led us in the Pledge of Allegiance and former AOMCHS President Mary Lee officially swore in the incoming board and officers for the 2025–2026 term.

~Jackie Angel



Left to right: Shack Lewis/VP & Property Mgr., Jackie Angel/Secretary, Lynna Lee/Cemeteries Chair, Jennifer Boren/Hospitality Chair, Bonnie Steadman/Historic Preservation Chair, Pat Miller/President, Kim Roddy/Treasurer, Janice Talluto/Trustee, Laura Best/Programs Chair. *Not pictured:* Marie Anderson/Archives Chair, Amanda Black/Membership Chair, Ben Hollingsworth/Publicity Chair, Connie Mashburn/Historian, Kim Zane/Trustee

PICNIC FUN!



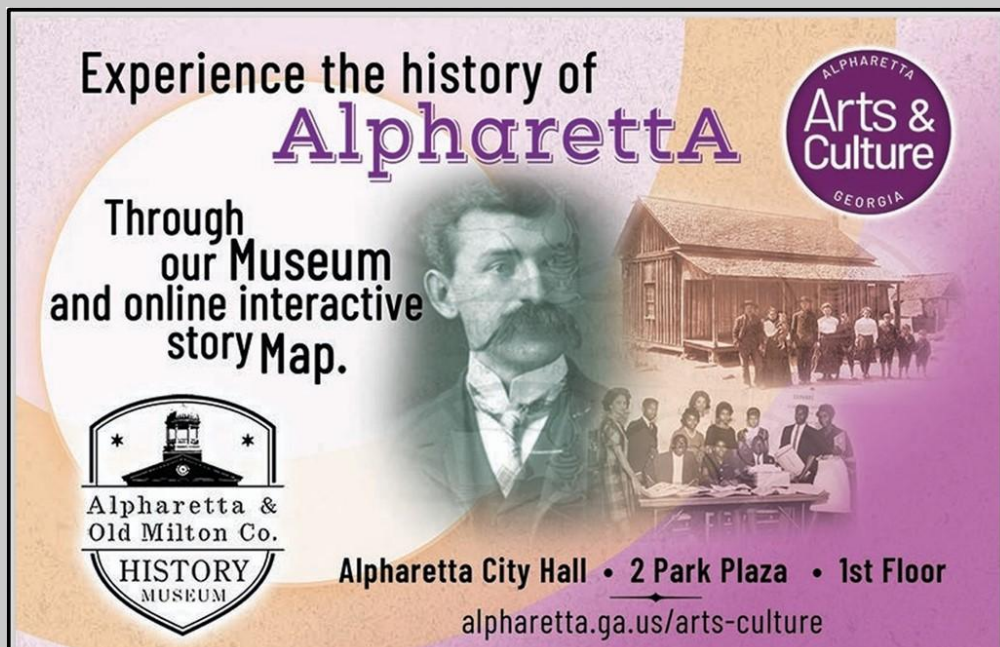
(Photos courtesy of Jackie Angel)



The city of Alpharetta Cultural Services Department has a wealth of information about local history. Be sure to check it out!

- Historical Online Tour Story Map of Alpharetta History – take a look at Alpharetta’s History and Historical Markers through an online interactive story map at:
<https://storymaps.arcgis.com/stories/f37f45610ba94828a4029e81f3e92462>
- Much more Alpharetta history can be found at:
<https://www.alpharetta.ga.us/government/departments/recreation-parks/cultural-services/alpharetta-history>
- The Cultural Services Department/AOMCHS is looking to add to the Story Map tour and is looking for help gathering any information on the following. Anything that the public has to share would be greatly appreciated. The locations are:
 - Pineview Cemetery
 - The Spence House
 - Old Milton courthouse
 - Any other historical information or photos about any/all of the sites listed on the online tour (see link above) would be greatly appreciated.

If you have information on any of the above to share, please email ptatummiller@gmail.com



Upcoming Classes at the Log Cabin

Class registration can be found here: <https://www.alpharetta.ga.us/government/publications/recreation-parks-activity-guides>

ACOUSTIC JAM FEST! with Metro Music Makers

Jam out with us this summer in the FFA Log Cabin! This is the perfect setting for an acoustic version of our rock band camp. We will be rockin' out on ukes and acoustic guitars. Campers will learn how to collaborate with fun musical styles and will rehearse songs as a group.

Campers must bring their own ukulele or acoustic guitar, a water bottle, and snacks. Family members will be invited to a performance on the last day of camp.

Ages 7 to 12

Cost: \$195 Residents / \$292.50 Non-Residents

Dates:	Day:	Time:	Activity#
Jul 7-11	Mon-Fri	9am-12pm	34387



+++++

MEMBERSHIP DUES

Reminder: Membership dues are paid annually in July and ensure you stay on our roster and receive all society communication and news. Dues are used to help with the Society's expenses and to provide quality services and programs. Dues are \$20 for a single membership and \$30 for a family membership. Current members who are 80 years old and older are designated as *Lifetime Members* and no longer need to pay a membership renewal fee. Dues can be paid online at <https://form.jotform.com/223174503583151>, in person by cash or check at our monthly membership meetings, or by mailing a check to:

AOMCHS Treasurer/Kim Roddy
Mansell House
1835 Old Milton Parkway
Alpharetta, GA 30009

+++++

*The Alpharetta & Old Milton County Historical Society (AOMCHS) is a non-profit 501(c) (3) organization governed by the State of Georgia. It operates under a Board of Trustees consisting of elected trustees, officers, and standing committee chairpersons. The motto for the Alpharetta & Old Milton County Historical Society is “Preserving the Past, in the Present, for the Future.” The Mansell House & Gardens is managed by the Historical Society and is located at 1835 Old Milton Parkway, Alpharetta. It is a special events facility that can be rented as a special place to celebrate the important events of life such as Births, Weddings, Graduations, Reunions, Showers, Anniversaries, Birthdays, Christenings, and more. The AOMCHS also manages the MHS FFA Log Cabin at 210 Milton Avenue which also can be rented for events. The Log Cabin houses the Society’s archives. **For more information on becoming a member** of the Alpharetta & Old Milton County Historical Society, please contact: Amanda Black, Membership Chair, at amanda@ohsugarsweets.com or fill out the membership application form at <https://form.jotform.com/223174503583151>*

- Follow us on *Facebook* and *Instagram* at the Alpharetta & Old Milton County Historical Society pages
- Website: www.aomchs.org

- +++++
- ❖ **History Matters**, the AOMCHS newsletter, is published quarterly. Previous issues can be found on the Society website at www.aomchs.org
 - ❖ Content provided by members of the AOMCHS
 - ❖ Newsletter Editor: Jackie Angel, AOMCHS Secretary

Summer 2025 (July, August, September)

Happy 4th of July!

